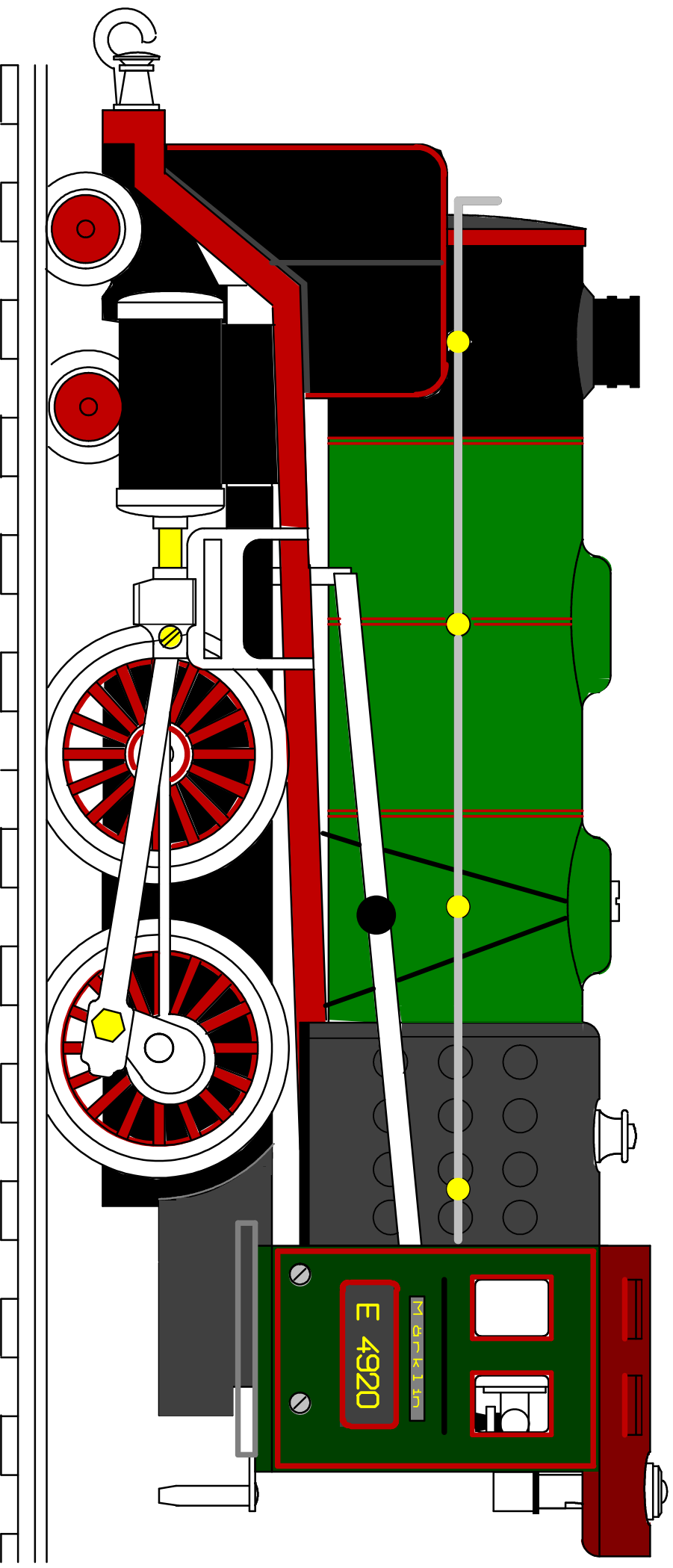


Echtdampf Lokomotive

Märklin E 4920

Spur 0 = 32 mm

Spiritusheizung



Maßabnahmezeichnung

Von

Manfred Baacke

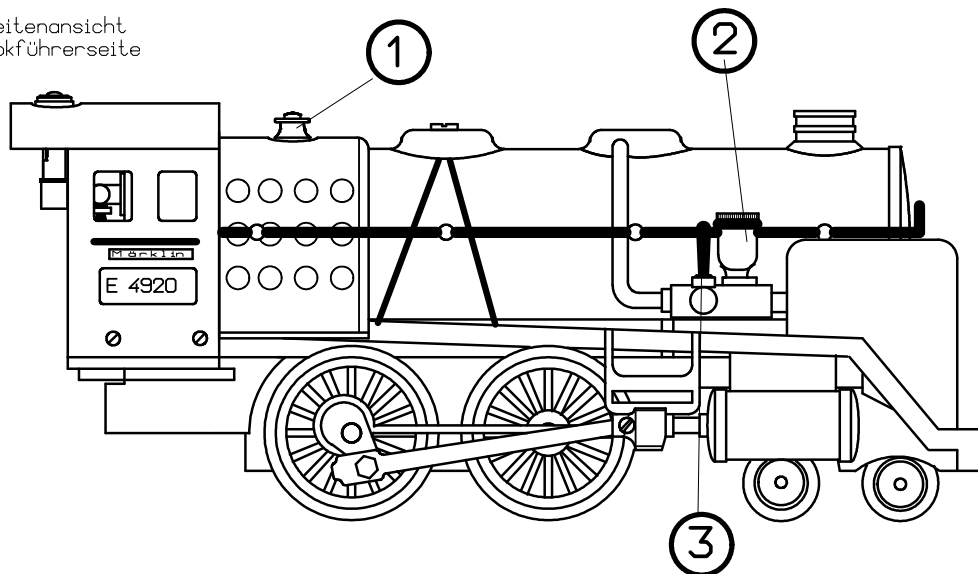
(0351/644 48 44

© BackMod

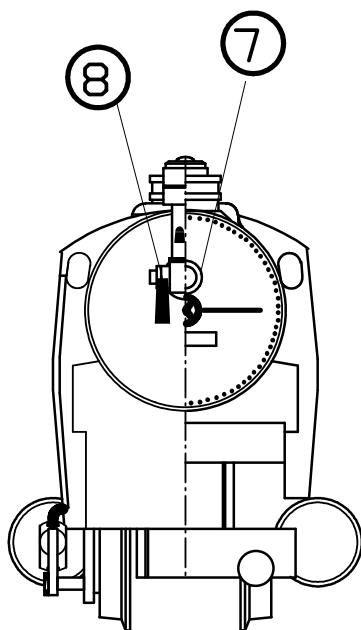
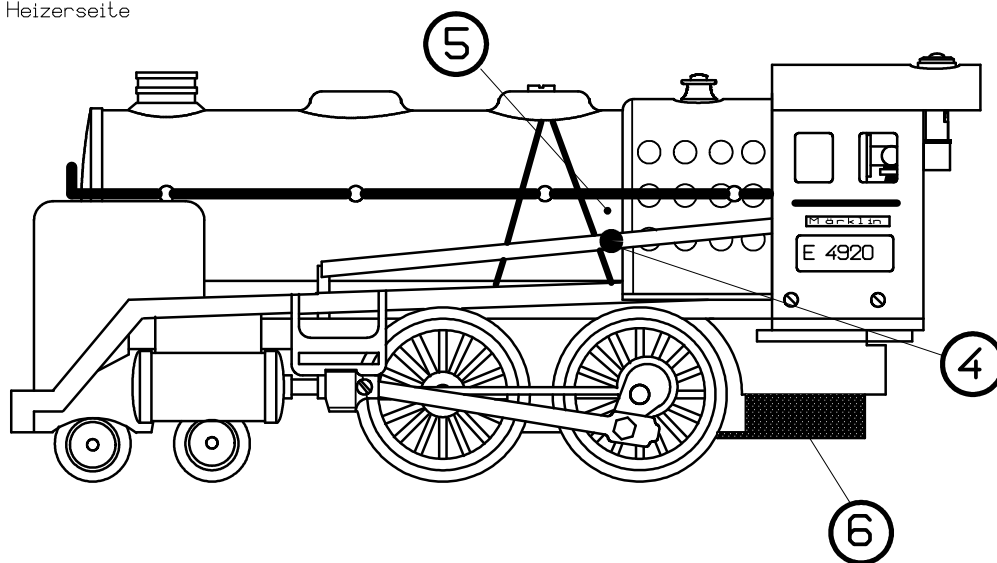
三

Vervielfältigungen
jeglicher Art sind
untersagt und werden
strafrechtlich geah-
ndet!

Seitenansicht
Lokführerseite



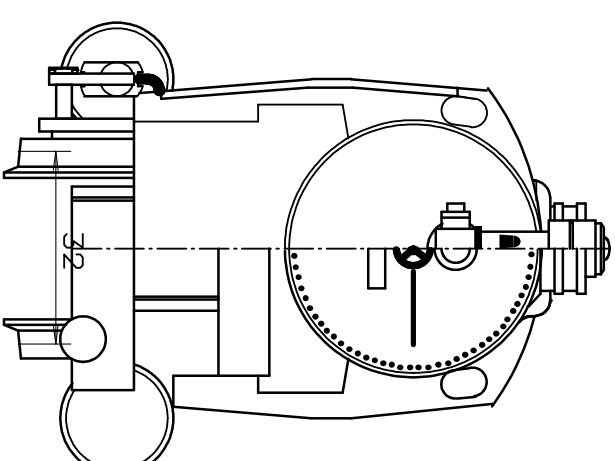
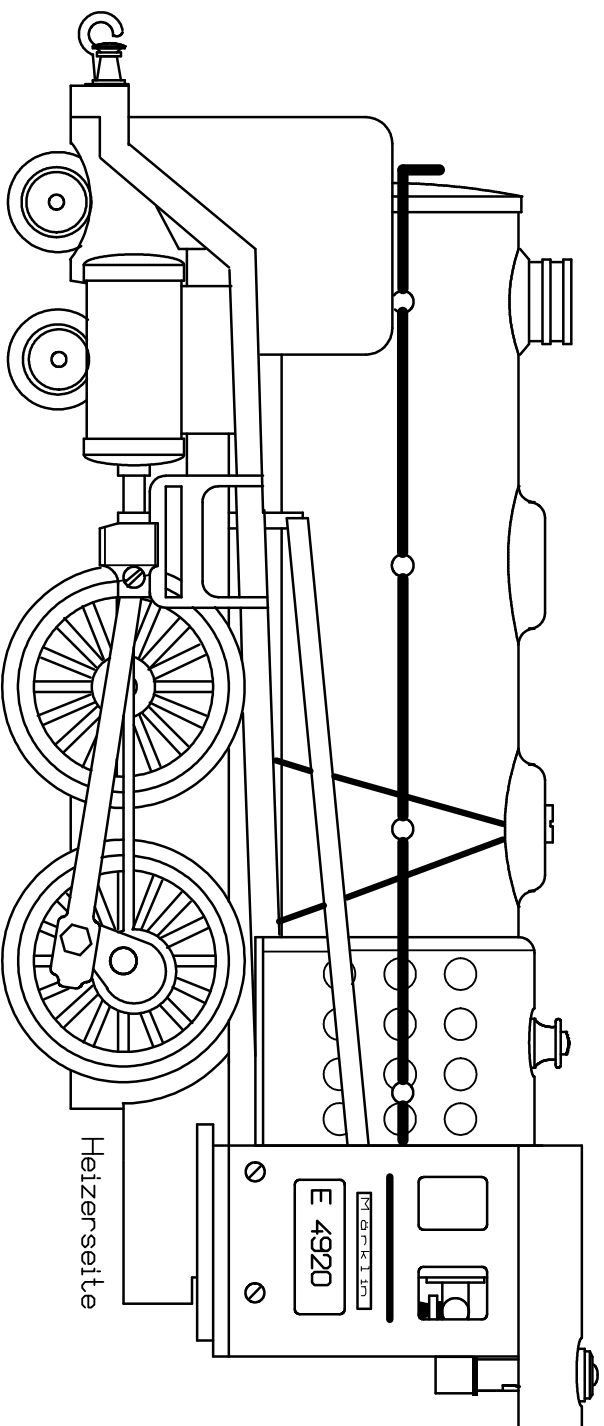
Heizerseite



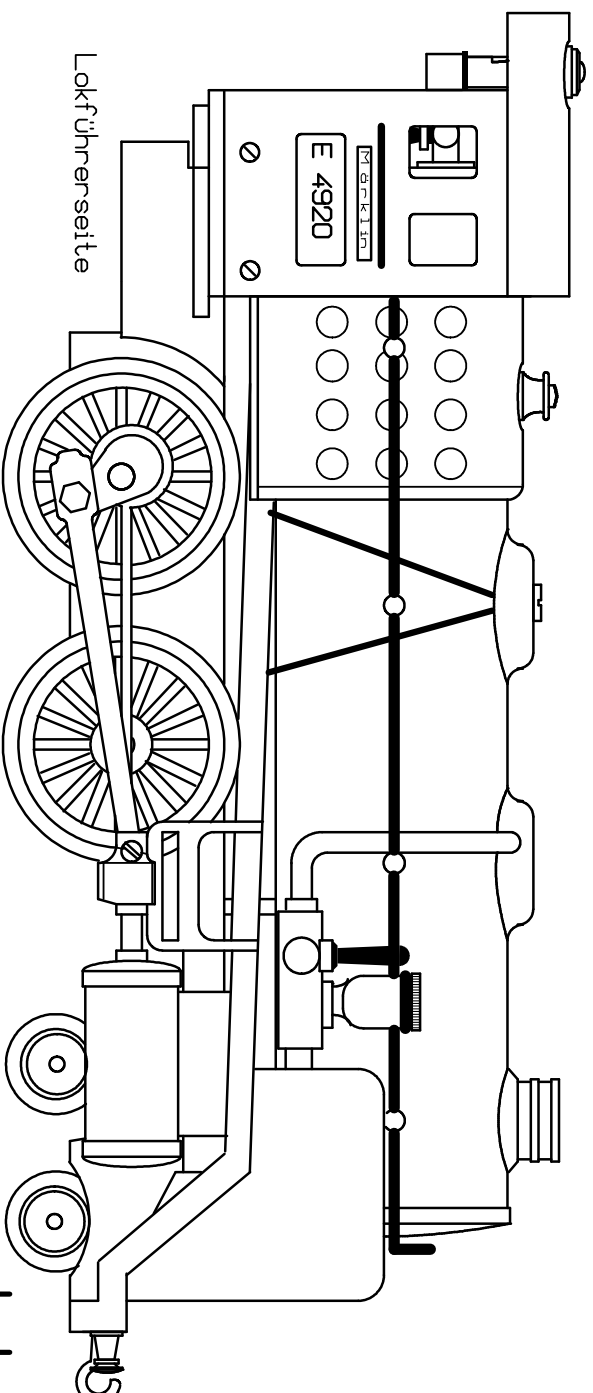
Ansicht von
hinten vorn

Legende:

- 1 = Sicherheitsventil
- 2 = Tropföler
- 3 = Dampfhahn
- 4 = Steuerhebel
- 5 = Mittenmarkierung
- 6 = Spiritusbrenner
- 7 = Einfüllschraube
- 8 = Dampffeiße mit Hahn

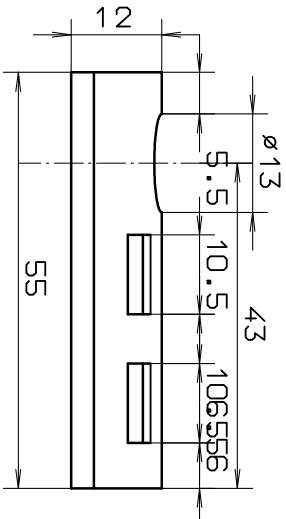
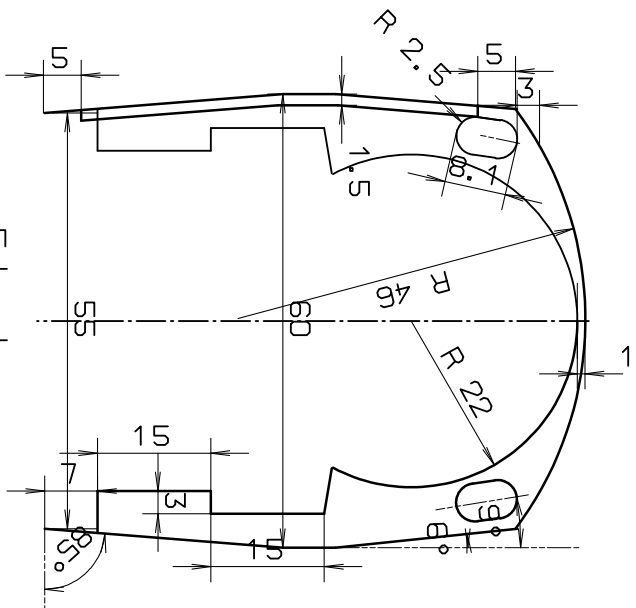
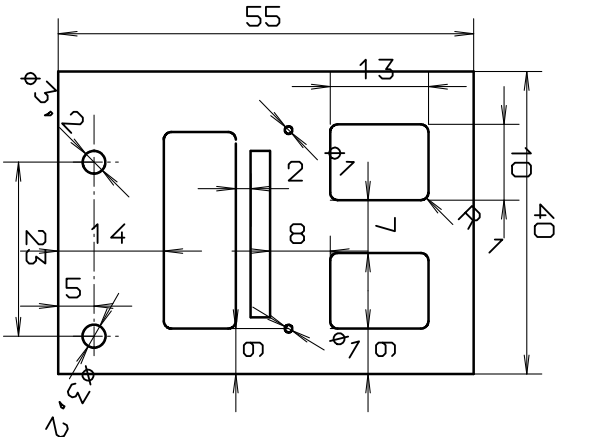


Ansicht von
hinten
vorn

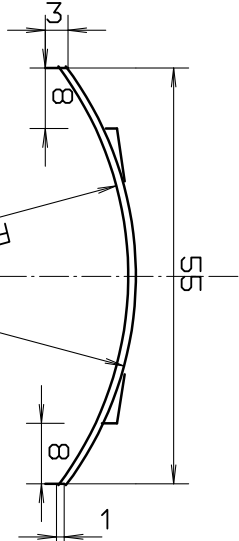


Lokansichten

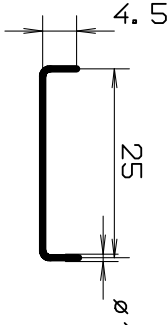
Fahrerhaus komplett



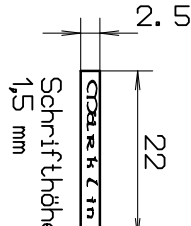
Dach mit Dachluken



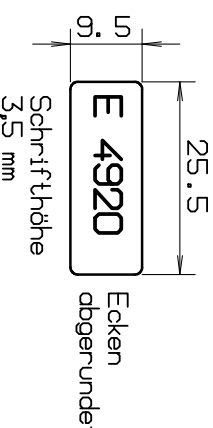
Fahrerhaus-
seiten
(deckungsgleich)



Griffstange



Schrifthöhe
1,5 mm

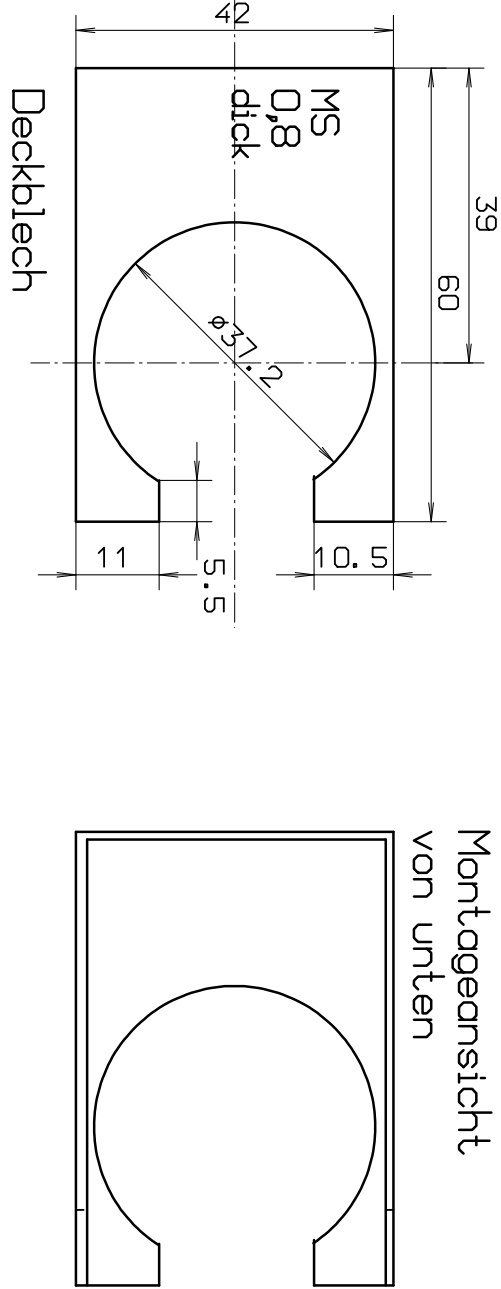
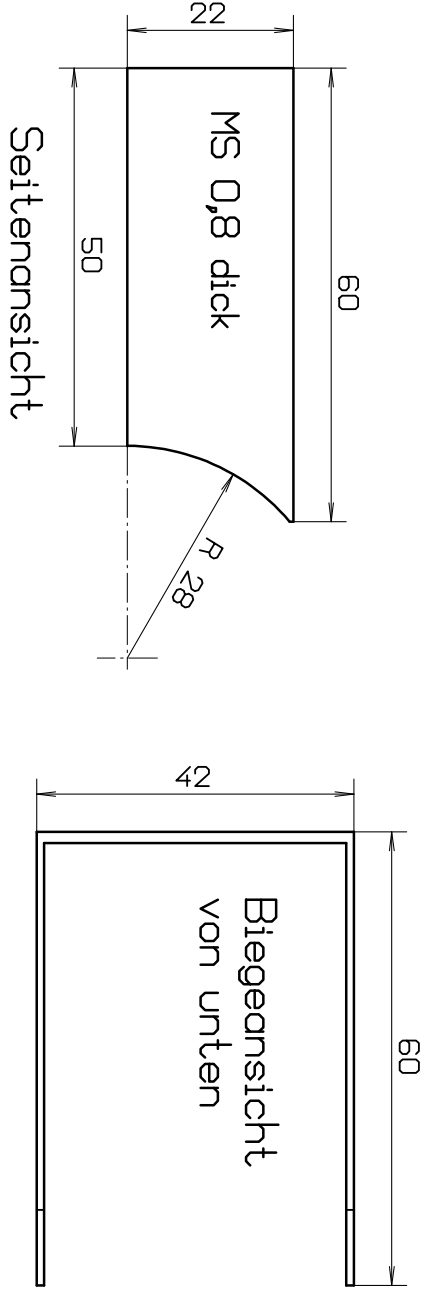


Schrifthöhe
3,5 mm

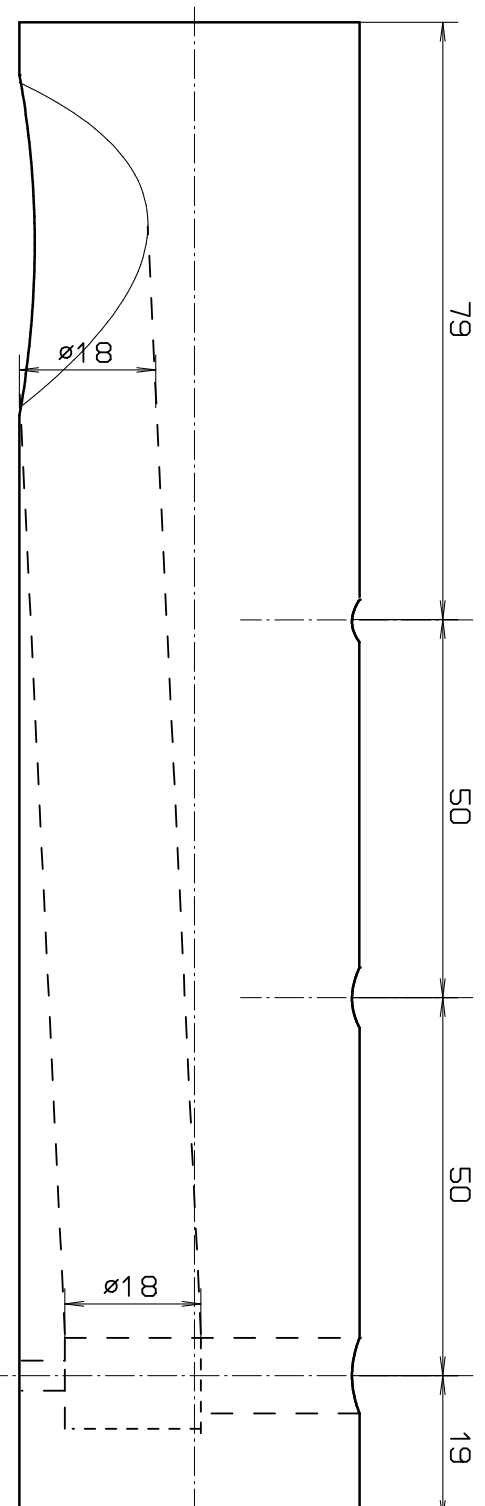
Ecken
abgerundet

Typenschilder

Feuerkasten

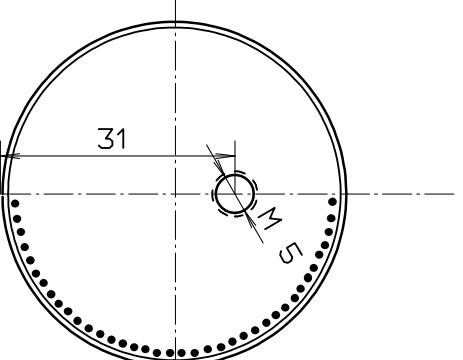


Kessel gelötet

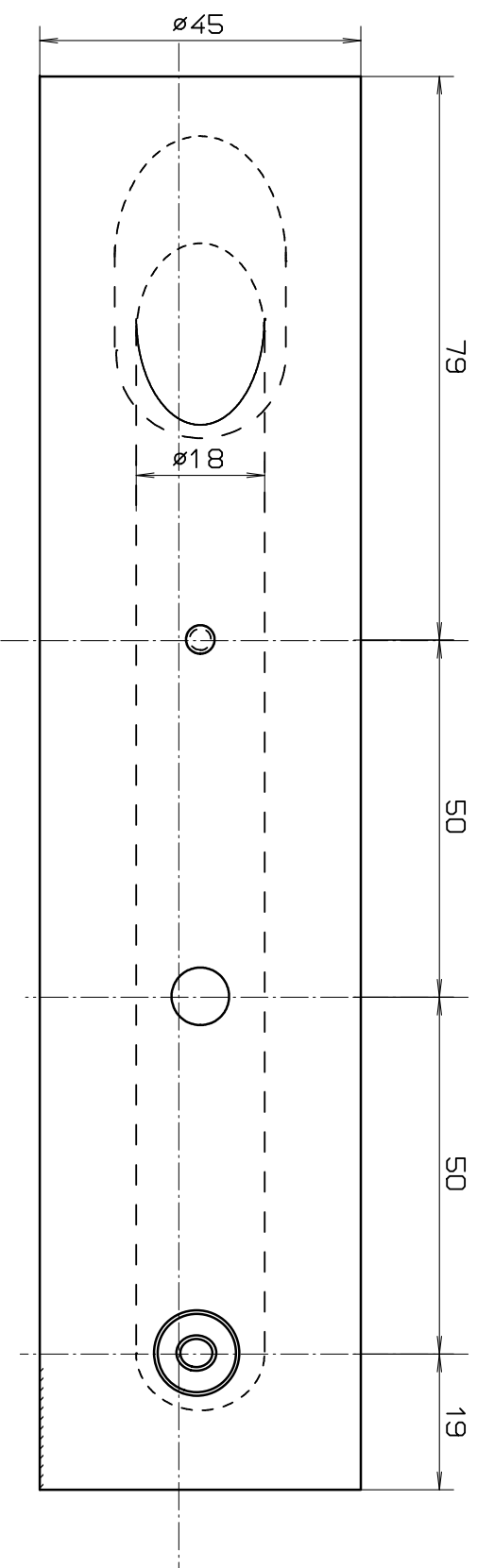


Kesselseitenansicht

innenliegende Rauch- und Kamin-
sowie Abdampfrohre

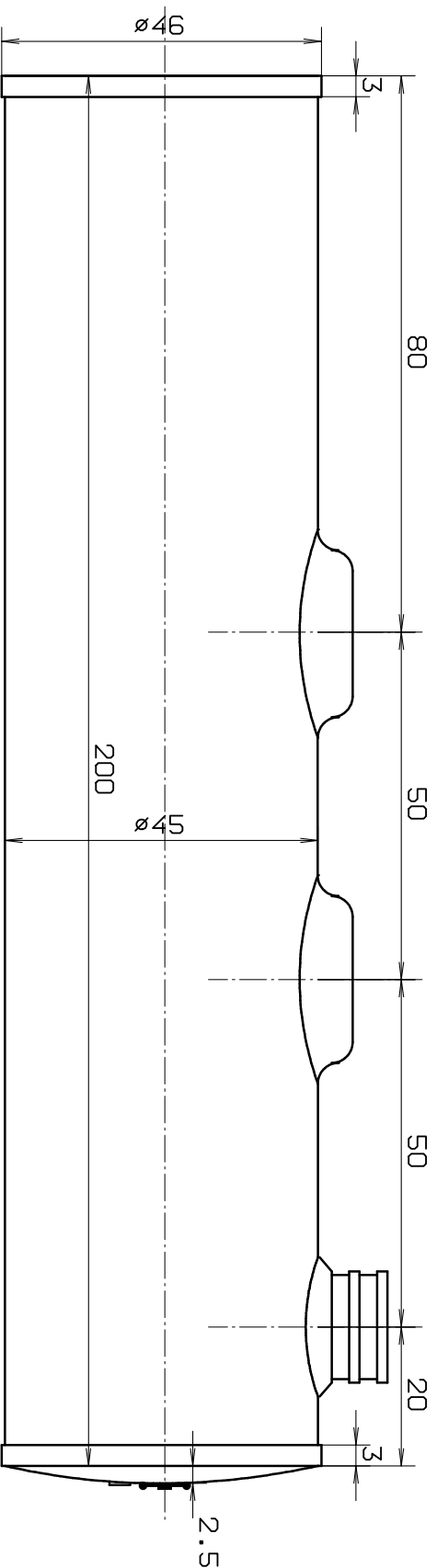


Kesseldeckel
je 5mm umgebör-
deter Rand



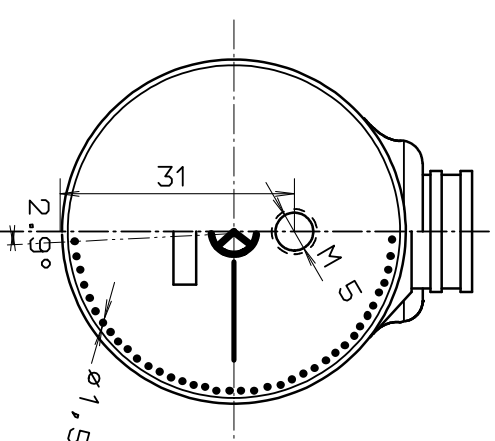
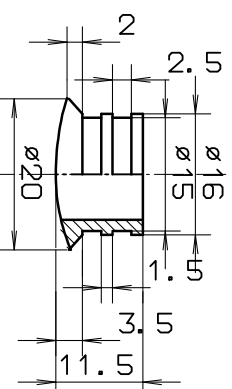
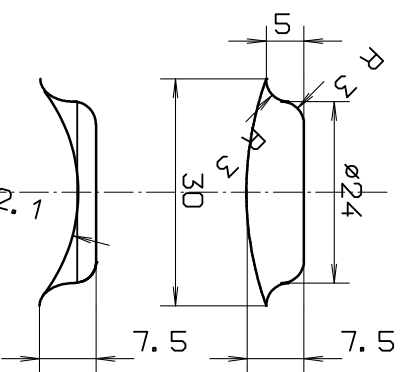
Kesseldraufsicht

Kesselbaugruppe

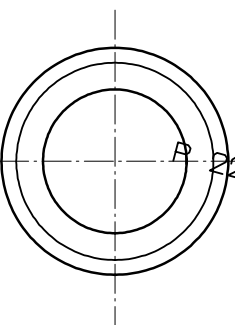


© BodMod

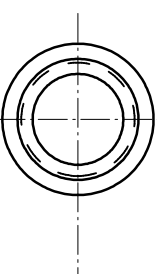
Kessel Seitenansicht



Ansicht von
hinten
vorn

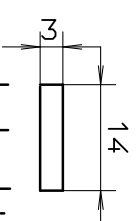


Dampfdom und
Sanddom



Schornstein

geprägt



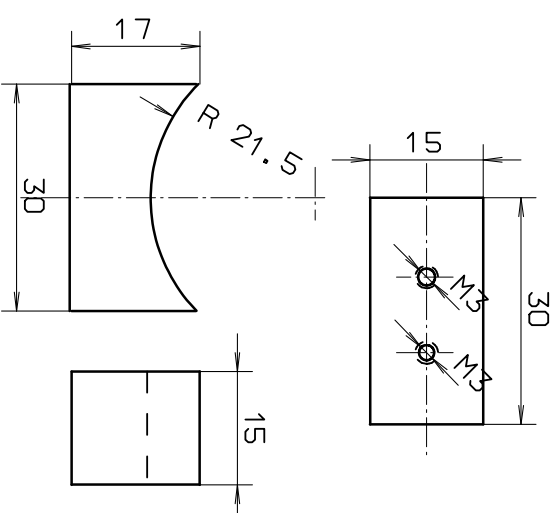
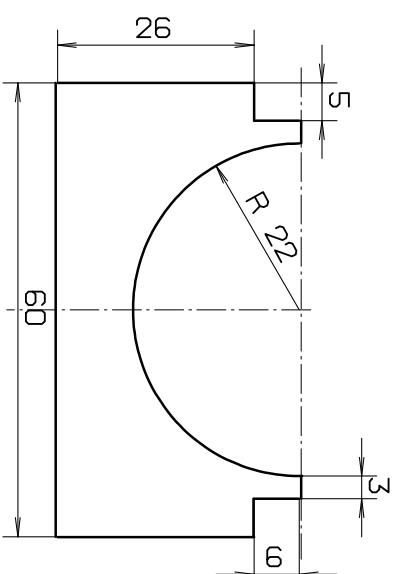
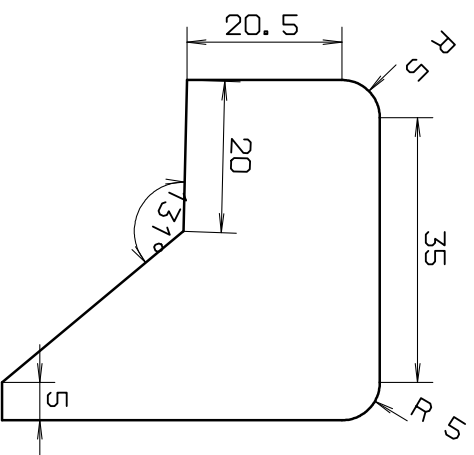
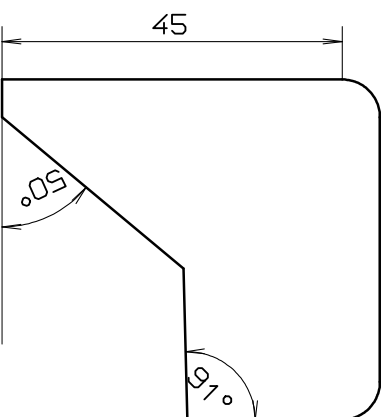
Lokschild

1mm breit
geprägt

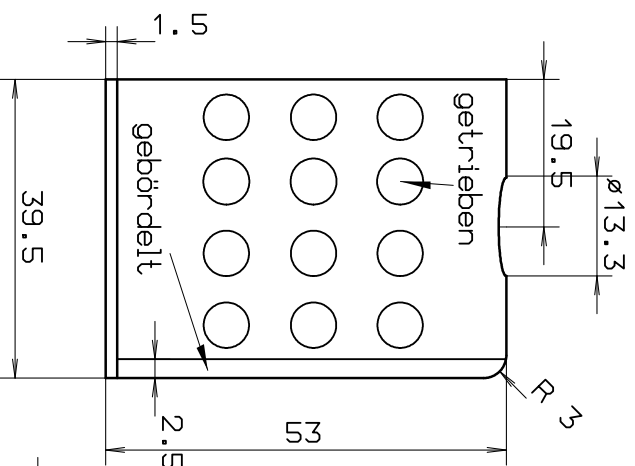


Rauchkammer-
handrad

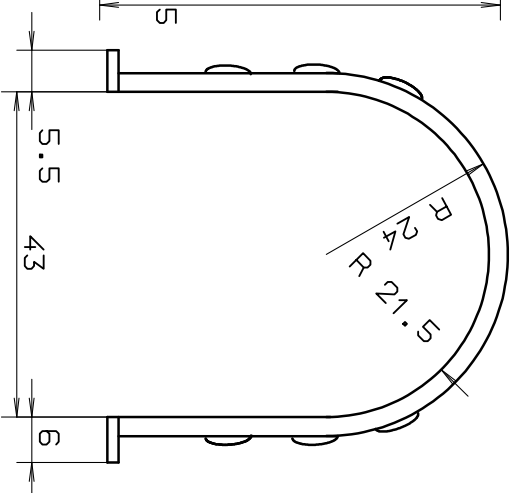
Kesselzubehör



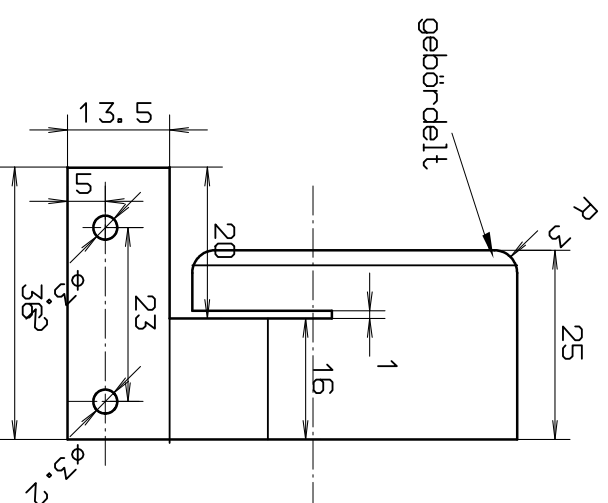
Leitbleche



Überhitzer
(nicht original)

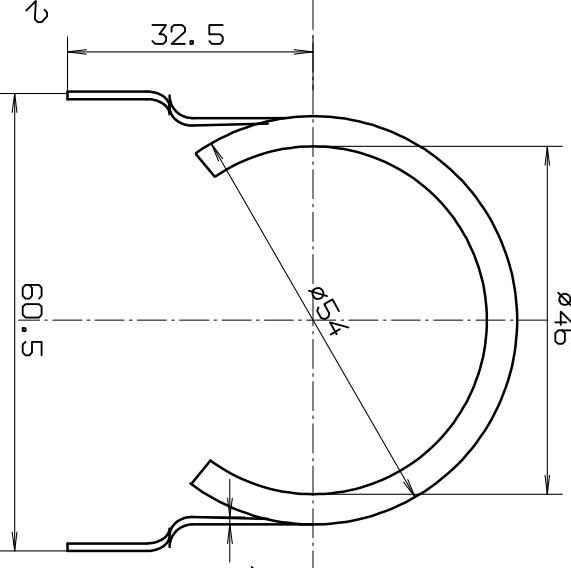


Kesselauflege hinten

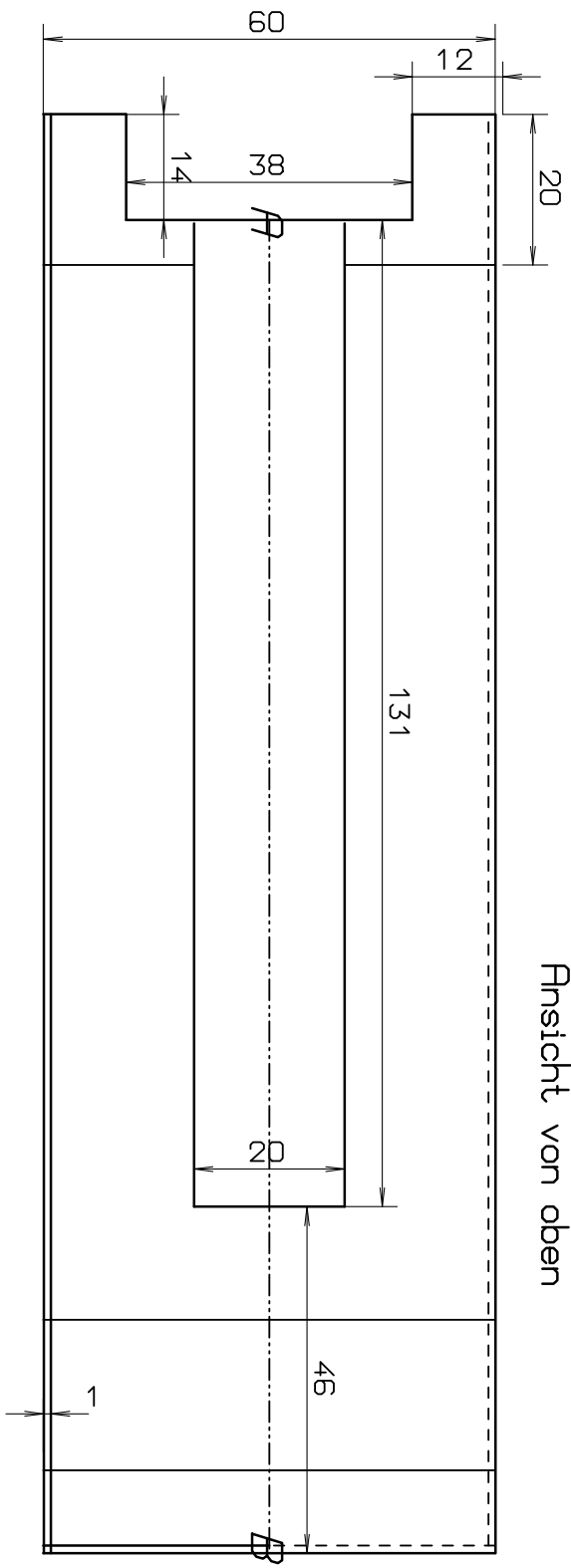


Kesselauflege vorn

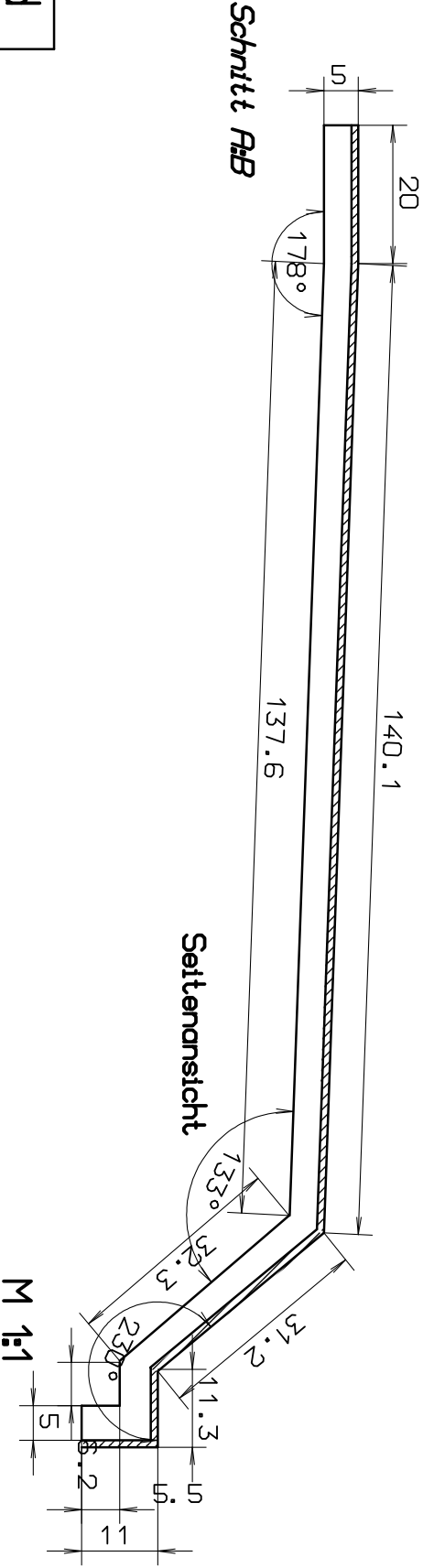
Kesselhalterung hinten



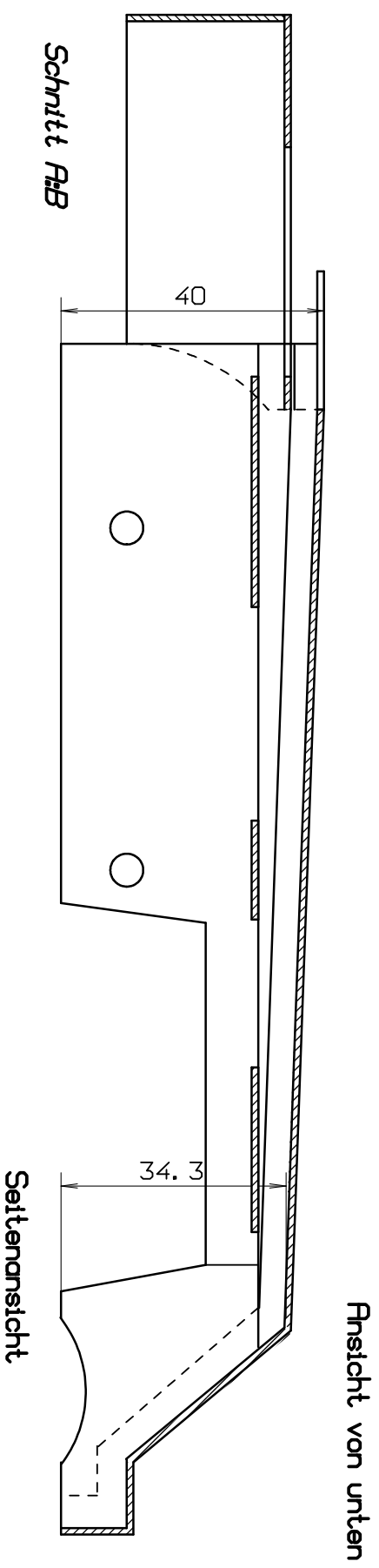
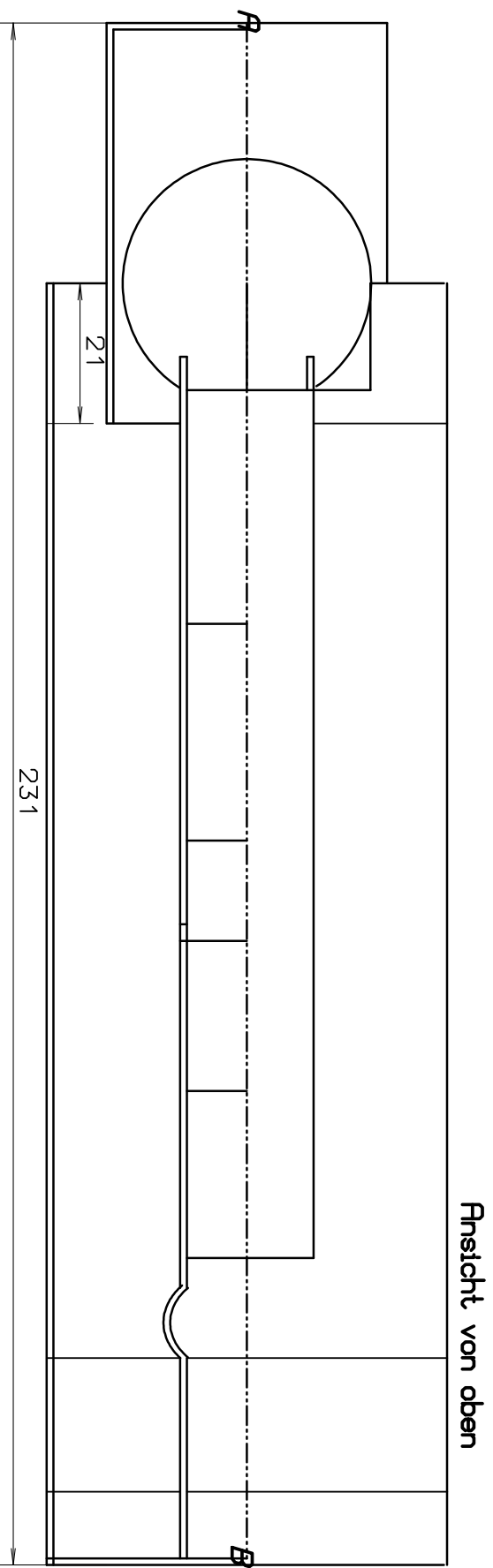
Laufblech



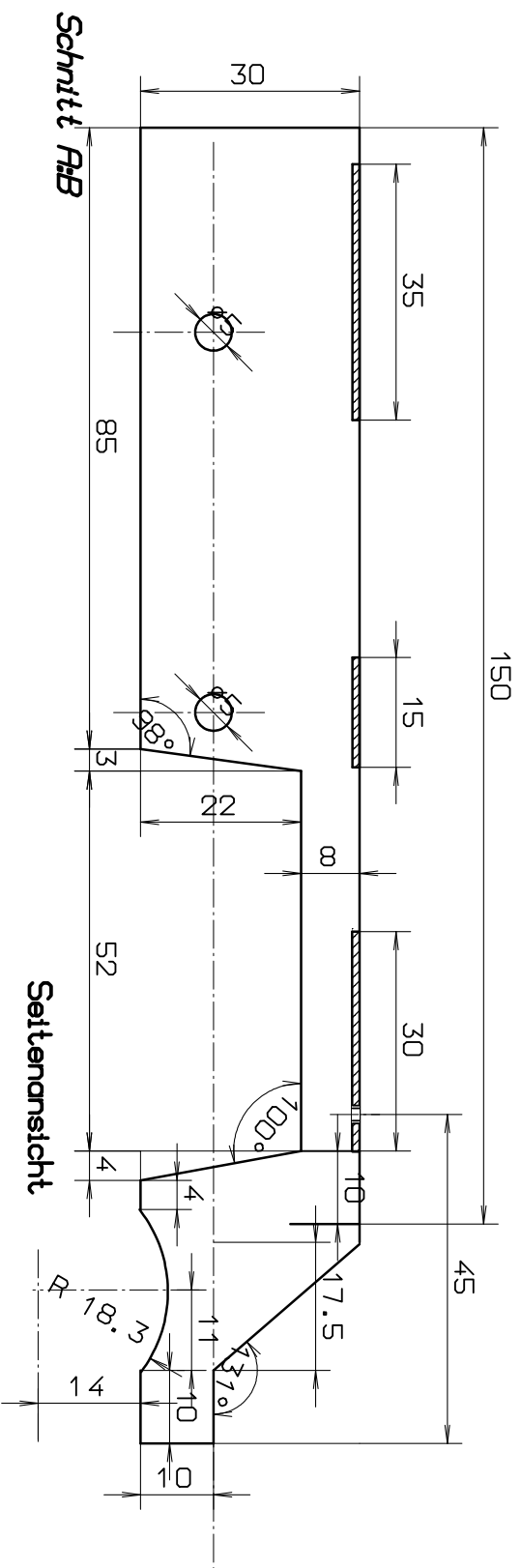
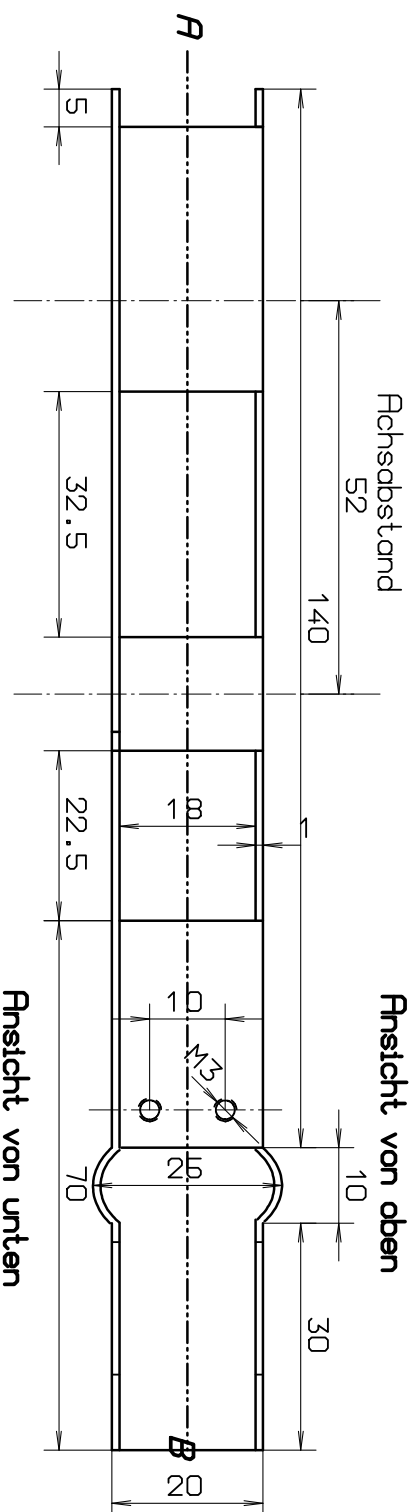
Ansicht von unten

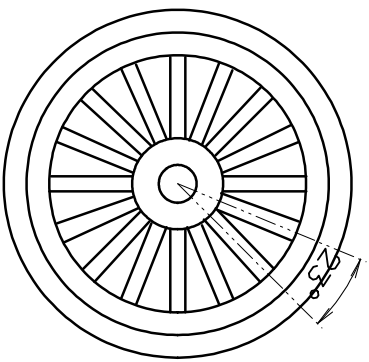


Montagezeichnung des Rahmens mit den Laufblechen

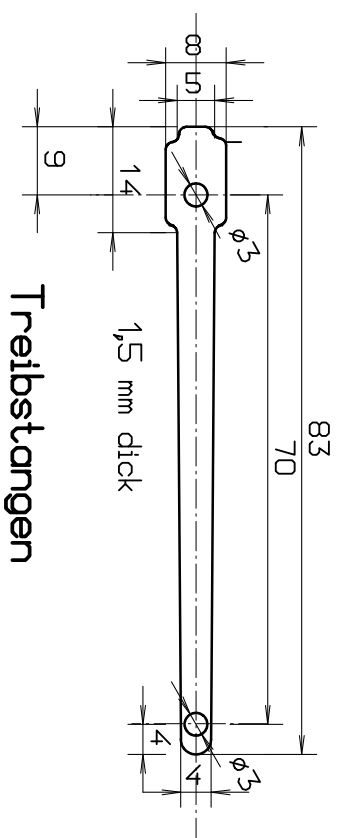
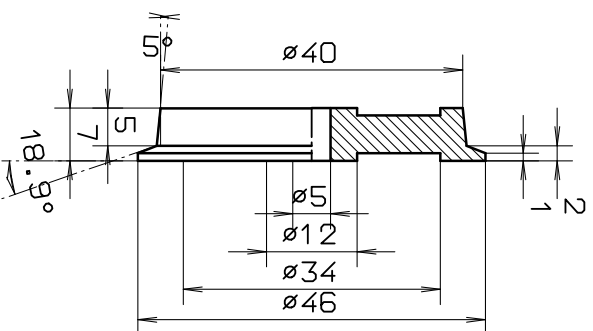


Rahmen komplett

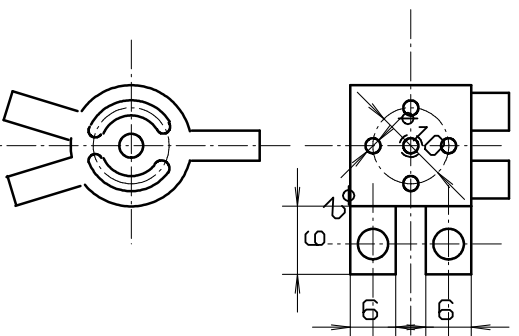




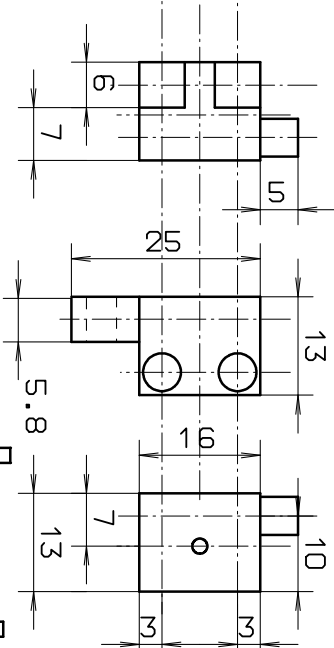
Räder



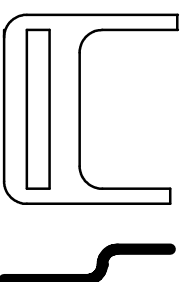
Treibstangen



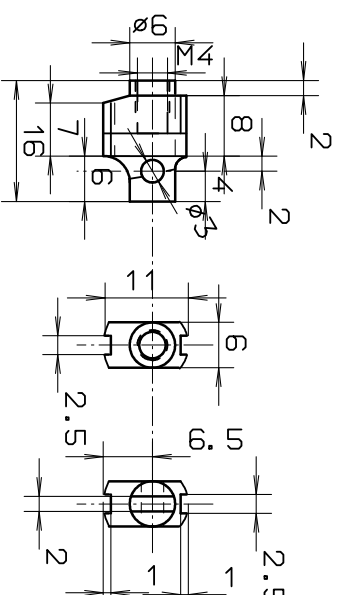
Umsteuerungs-
schieber



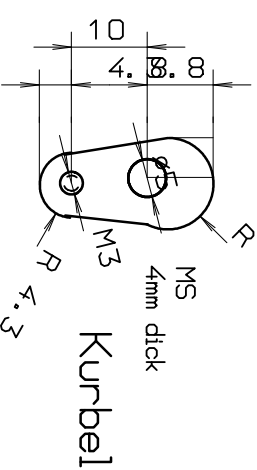
Umsteuerungs-
kasten



Seite
vorn
Kreuzkopf-führung



Seite
links
rechts
Kreuzgelenk



Seite
vorn
Kreuzkopf-führung
Kurbel

Feuerkasten

